


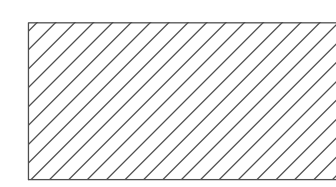


Broward County Wellfield Map

Broward County Board of County Commissioners Chapter 27- Article XIII Rule of 6/11/2013

Legend

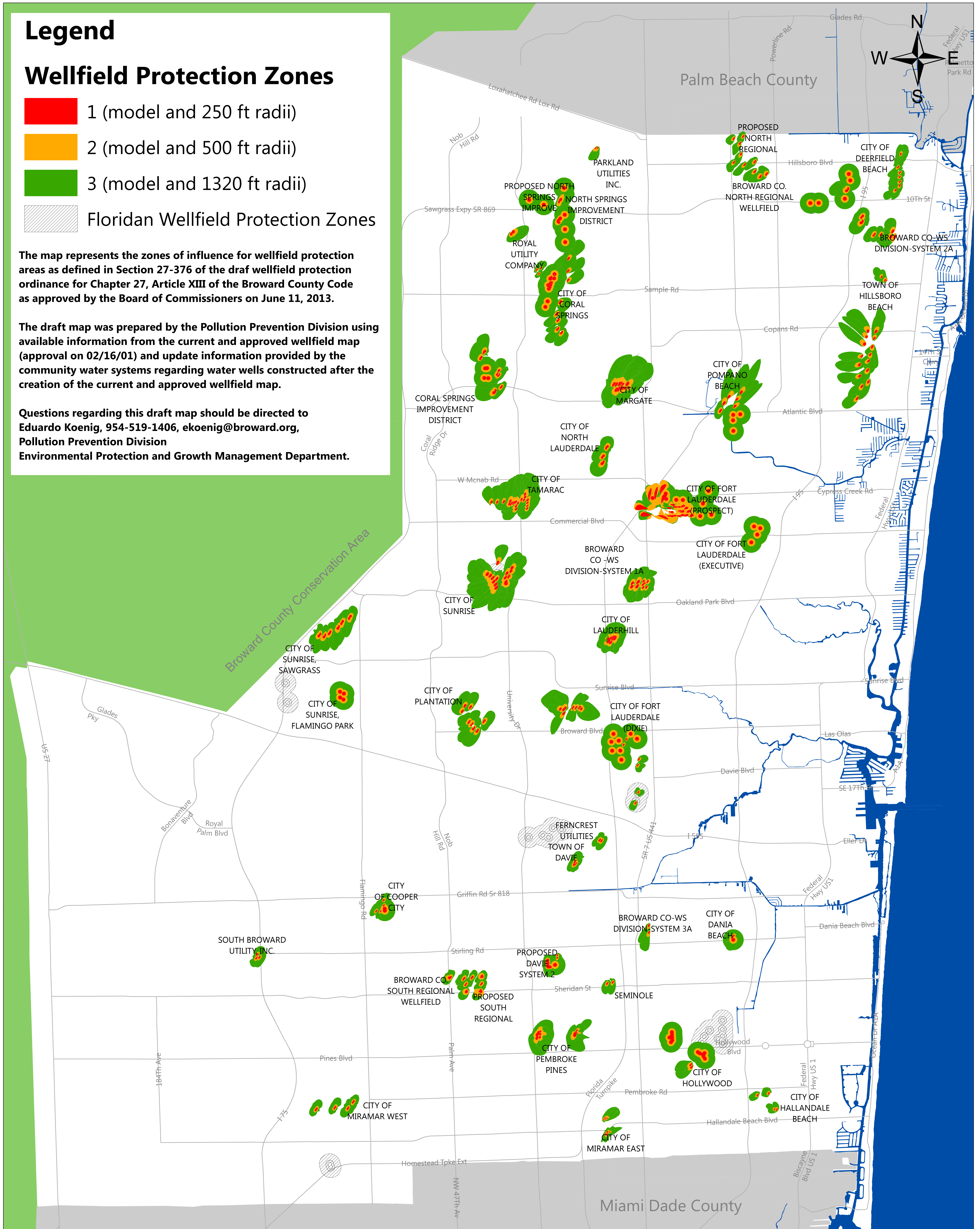
Wellfield Protection Zones

-  1 (model and 250 ft radii)
-  2 (model and 500 ft radii)
-  3 (model and 1320 ft radii)
-  Floridan Wellfield Protection Zones

The map represents the zones of influence for wellfield protection areas as defined in Section 27-376 of the draft wellfield protection ordinance for Chapter 27, Article XIII of the Broward County Code as approved by the Board of Commissioners on June 11, 2013.

The draft map was prepared by the Pollution Prevention Division using available information from the current and approved wellfield map (approval on 02/16/01) and update information provided by the community water systems regarding water wells constructed after the creation of the current and approved wellfield map.

Questions regarding this draft map should be directed to Eduardo Koenig, 954-519-1406, ekoenig@broward.org, Pollution Prevention Division Environmental Protection and Growth Management Department.



0 0.75 1.5 3 4.5 6 Miles